

MANUAL SureChlor S3500

Contents

Installation

Cell	2
Power pack	2
Off Peak Installation	2
Connecting the Pool Pump	2
Installation Layout	3

Operation

Chlorine Control	4
LED Chlorine Output Monitor	4
Timer	5

Maintenance

Chemical Balance	6
Maintenance Frequency	6
Cell Cleaning	6
General Warnings	6

Customer Responsibilities	7
---------------------------	---

Warranty Terms and Conditions	7
-------------------------------	---



Heaters and other equipment in the return to pool line must be installed before the cell (i.e. Between the cell and filter)



Remember:
The filter pump must be plugged into the Power Pack.



When secure, plug the lead into a suitable 240 volt power point, but **DO NOT SWITCH THE UNIT ON**



Connecting a pump load greater than 1.5kW, or the use of double adapters/stackable plugs will void the warranty.

S3500 Cell

The S3500 cell must be installed horizontally (level) within 5 degrees, in the return to pool line. The two plumbing inlets must point down.

S3500 Power Pack

The Power Pack must be mounted on a vertical wall or fence within 1.5 metres of the cell and at least 1 metre above the ground. The Power Pack must also be in a position to allow its supply lead to be plugged into a 10 amp 240 volt power point.

Select a suitable place to attach the mounting bracket, at least 1 metre above the ground and clear from hazards. Ensure that the location selected is well ventilated (allowing plenty of airflow behind the unit) and is not in direct sunlight (If mounted in direct sunlight the LED indicators will be less visible). The suitable location must not be attached to or on top of a source producing large amounts of heat (e.g. metal fence or shed wall) as this will void your warranty.

Mount the bracket horizontally ensuring that the vent louvers above the screws are facing upwards. Carefully hook the Power Pack onto the mounting bracket by the top edge at the rear of the power pack. When secure, plug the power lead into a suitable 240 volt power point but **DO NOT** switch the chlorinator power pack on.

Off-Peak Installations

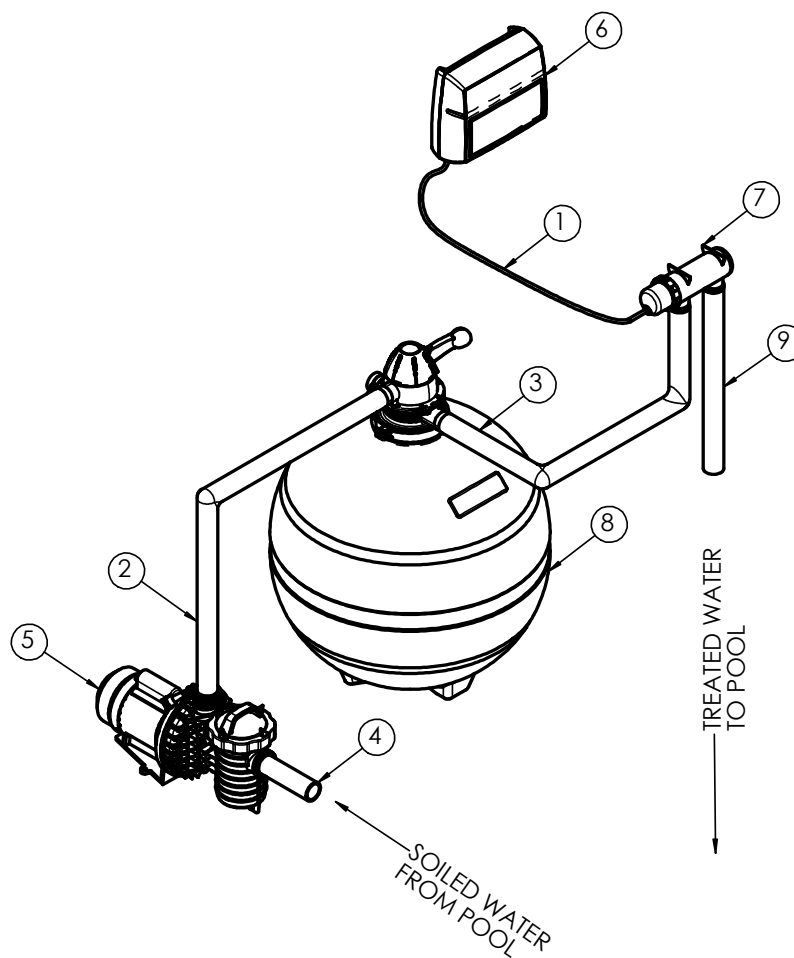
This unit is suitable for off-peak tariff supply (but will require installation by a suitably qualified tradesman), when fitted with a battery backup timer.

Connecting the Pool Pump

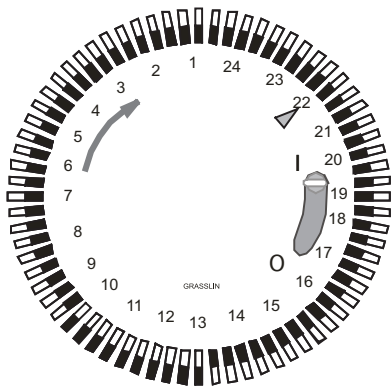
Raise the tinted Control Panel Cover on the front of the Power Pack and loosen the two retaining screws in the bottom right hand corner and remove the cable entry cover by pulling downwards. Plug the pool pump into the pump socket on the front of the unit. Refit the cable entry cover making sure all cables pass through the tunnel behind it to ensure they do not interfere with the proper closing of the Control Panel Cover. Tighten retaining screws.

Installation Layout

ITEM NO.	PART NUMBER
1	CHLORINATOR CABLE
2	PUMP TO FILTER PIPE
3	FILTER TO CHLORINATOR PIPE
4	SKIMMER TO PUMP PIPE
5	CENTRIFUGAL PUMP
6	CHLORINATOR CONTROLLER
7	CHLORINATOR ELECTRODE CELL
8	PRESSURE FILTER
9	CHLORINATOR TO POOL PIPE

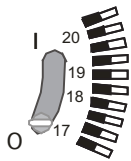


Timer

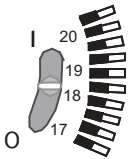


For Manual Operation

Move the slide switch on the face of the timer to the position marked "ON". The pump and chlorinator should now be operating (if the chlorine control is correctly adjusted). The chlorinator and pump will now be operating regardless of the timer pin positions.

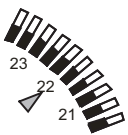


To turn the pump and chlorinator off, move the slide switch on the face of the timer to the "OFF" position. The chlorinator and pump will now be off regardless of the timer pin positions.



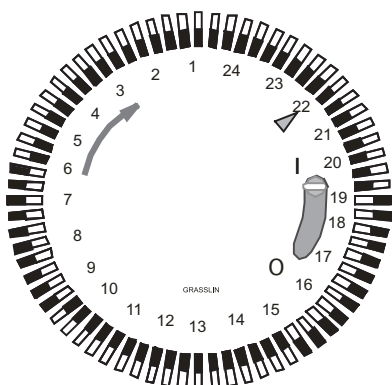
For Automatic Operation

Move the slide switch on the face of the timer to the position marked "AUTO". The pump and chlorinator should now operate when the next ON cycle is detected by the time switch (if the chlorine control is correctly adjusted)



To Set the Clock Function

Rotate the dial in a clockwise direction only to align the present time of day with the indicator arrow on the right hand side of the face of the timer, just above the slide switch. (time shown 10 pm)



Setting the START and STOP Times

Each pin is set to a 15 minute increment. Slide the pins outwards on the timer face for morning and late afternoon operation. We recommend an initial operating period of 6 - 8 hours in Summer and 2 - 4 hours in Winter. This will vary depending on the relative size of your pool, filter and chlorinator



PLEASE NOTE:

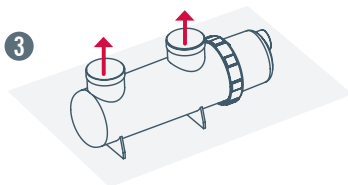
Proof (i.e. hard copy) of regular water analysis by a reputable professional pool shop will be required as evidence of suitable water quality and balance in the event of a warranty claim.

Chemical Balance Guide

Your S3500 chlorinator is designed to be used for swimming pool water, which needs to be balanced in accordance with Langlier Saturation Index, with a pH level of 7.0 to 7.6 and maintains the recommended levels of sanitizer. (i.e 2 - 3 ppm of free chlorine). Regular water analysis and advice on correct addition of chemicals and/or products to achieve suitable water quality and balance by a reputable professional pool shop will ensure bather health and comfort and extended equipment service life.

Maintenance Frequency

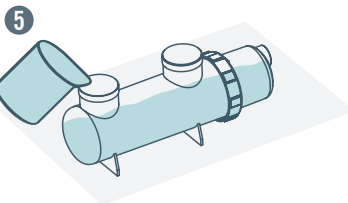
Your S3500 chlorinator has been designed to operate for extended periods of time with a minimum of maintenance. The cell cleaning function is performed automatically via the velocity of the water travelling over the plates. However manual cleaning on a regular six monthly basis will enhance chlorine production and extended equipment service life.



HANDLING ACID:

Rubber gloves and protective eyewear must be worn.

DO NOT put used acid solution into the pool



If this system is fitted with a backup battery and real time clock. The time will not require resetting.



Under no circumstances should salt, algaecides, chemicals and any other product other than DE be added to the pool via the skimmer box while in operation

Cell Cleaning

Manual Procedure

1. Remove S3500 Power Pack plug from 240 volt power point.
2. Remove cell from plumbing.
3. Turn cell upside down (inlets facing upwards) and place on a level non-metallic surface in a well ventilated area.
4. Prepare an 8:1 acid cleaning solution by firstly measuring **2 litres of water** into a plastic bucket and then carefully adding **250ml of Hydrochloric Acid**. Stir thoroughly with a wooden stick.
5. Carefully pour sufficient cleaning solution into the upturned cell so as to fully cover the metal electrodes.
6. Allow to stand for 10 minutes then flush out with clean water.
7. If electrodes still show white deposits, repeat the above steps.
It is recommended that a warm water detergent solution be used to soak the electrodes at this point if there is any evidence of body fats, oils or grease.
8. Refit the cell to plumbing line making sure both rubber "O" ring seals are in place.
9. Re-connect the Power Pack plug to 240 volt power point and switch on.

General Warnings

The Warranty will be void if the Power Pack is installed or operated:

- On, or less than 1 metre from the ground.
- Placed in a location that can be flooded by storm water or by accidental immersion.
- Where the airflow is obstructed, i.e. Within a poorly ventilated auxiliary enclosure.
- Mounted close to, against, or on top of an auxiliary heat source (e.g metal fence or shed wall)
- With the weatherproof Control Panel Cover permanently open or removed if installed outdoors
- With a pump connected to the 240 volt outlet socket greater than 1.5Kw continuous capacity
- From an electrical supply socket which is not rated to supply 10 amps at 220 – 240 volts 50Hz and is not adequately protected by the correct size fuse or circuit breakers.
- Extension leads are not recommended for use with this equipment because they are unsafe in and around the pool zone.

For extended equipment service life and peace of mind, Poolrite Chlorinator Systems Pty Ltd recommends that your S3500 is serviced regularly on a six monthly basis by a reputable qualified pool professional.



A service charge will be made for service as a result of the adjacent points

Customer Responsibility

Your "Before You Call For Service" Checklist

Before calling for service read the instructions in this **Quick Start Guide** carefully.

The following points are your responsibility:

- Power point not turned on or faulty (check with another appliance)
- Time switch incorrectly set
- Unit incorrectly installed
- Pump not plugged into S3500 Pump Outlet Socket
- Controls incorrectly set
- Poor water chemistry (salt level, pH etc.)
- Cell not being cleaned (acid wash) properly.
- Poor water flow (check filter is clean / pump operating / skimmer free of obstructions)
- Unit being tampered with by unauthorised persons.

Warranty Terms and Conditions

Your new Surechlor S3500 chlorinator is manufactured to the highest possible standards using the most up-to-date technology. Accordingly the equipment carries the following Warranty, should a fault occur due to faulty manufacturing or materials.

Important: In the event of a fault covered by warranty occurring, the purchaser must, in the first instance, contact Poolrite Chlorinator Systems Pty. Ltd. or the closest authorised distributor. Poolrite Chlorinator Systems Pty Ltd warrant the original purchaser of the Power Pack and Electrolytic Cell for a period of 24 months from the date of purchase by the original owner, with the Cell also warranted for an additional 24 months pro-rata, should examination disclose to its satisfaction that the Electrolytic Cell or Power Pack has failed due to faulty manufacturing or materials.

The Warranty is Void if the following occurs:

- Operating the product and/or cleaning the cell other than in accordance with this **Quick Start Guide**
- Damage caused from mechanical cleaning (eg. use of a screw driver or other sharp implement)
- The safety flow detector, power terminals and/or connections have been tampered with
- Cell power terminals have been submerged in acid solution whilst cleaning
- Incorrect water chemistry (refer to **Chemical Balance Guide** under **Maintenance instructions**)
- Salt level below 3000 ppm or above 7000 ppm. Recommended level is 5000 ppm
- The chlorinator is installed on a pool size which is not recommended for its model
- The Power Pack has been serviced by a person other than a person authorised to do so by Poolrite or its agent
- Non-swimming pool grade salt has been used in the pool
- Metal based algaecides have been used
- High levels of metallic ions in water
- Insect / vermin infestation
- Excessive Cleaning and/or Excessive Scaling
- Fuse is blown
- Negligence and/or Acts of God

This Warranty is applicable to workmanship and materials. **Poolrite Chlorinator Systems Pty Ltd** will repair or replace at no charge, all parts returned freight paid, which display faulty workmanship or materials. Poolrite Chlorinator Systems Pty Ltd accepts no responsibility for loss, damage or injury to persons or property arising from Warranty failure of equipment, or installation of that equipment. Unless with the express prior authority of Poolrite Chlorinator Systems, any repair or replacement shall be provided only by Poolrite Chlorinator Systems Pty Ltd or its authorised distributors and this Warranty shall not extend to any expenditure otherwise incurred.



All Surechlor salt water chlorinators have been fully tested and approved by the Queensland Electrical Safety Office and have been issued with an AS/NZS 3136 Certificate of Approval.



Additionally the Power Pack is rated as complying with IPX3 as per AS1939 and as such can be legally installed within the designated Pool Zone as defined in Section 7 of AS/NZS 3000 wiring rules.



Manufactured by Poolrite Chlorinator Systems Pty Ltd ABN 97 165 100 854
Email: sales@poolritesystems.com Web: www.poolritesystems.com

2/629 Toohey Rd SALISBURY QLD 4105 PH +617 3114 2090 FAX +617 3277 2396

CHLORINATORS